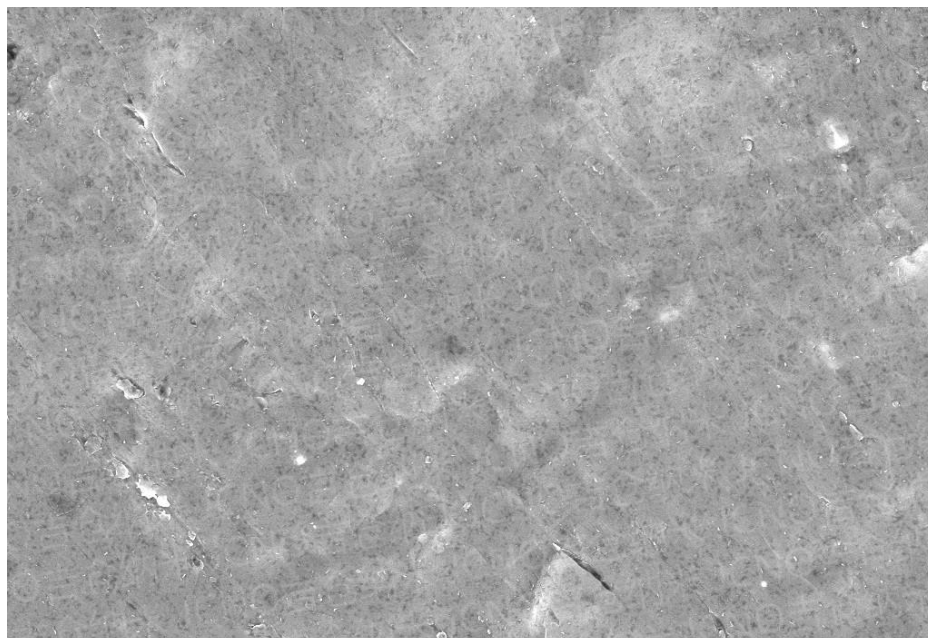
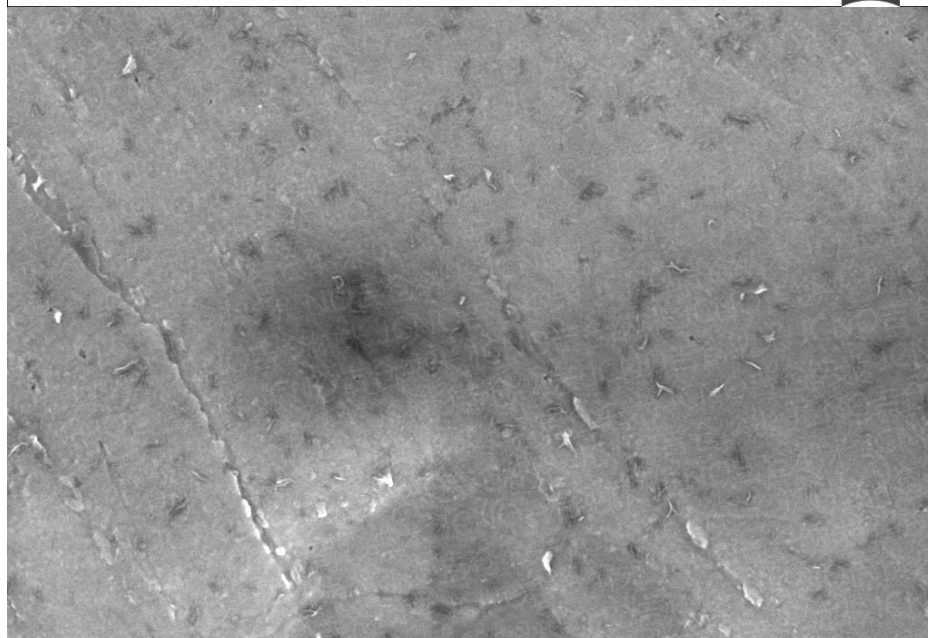


单层物理法石墨烯 JCPG-99-0.3-100n



1 μ m EHT = 5.00 kV Signal A = InLens Date :6 Dec 2016
WD = 6.1 mm Mag = 10.00 K X Time :15:20:21 ZEISS



200 nm EHT = 5.00 kV Signal A = InLens Date :6 Dec 2016
WD = 6.1 mm Mag = 50.00 K X Time :15:22:09 ZEISS

Nanjing JiCang Nano Technology Co., Ltd

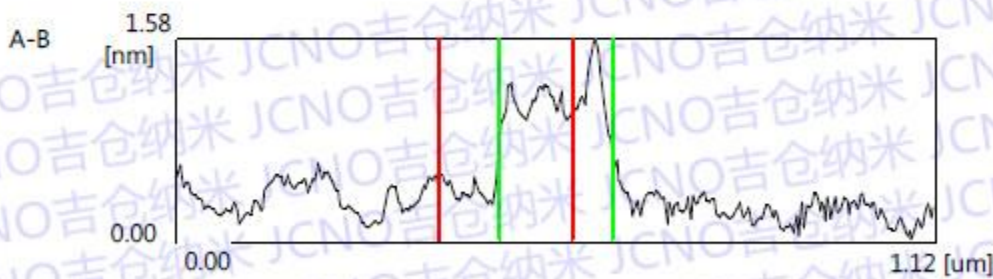
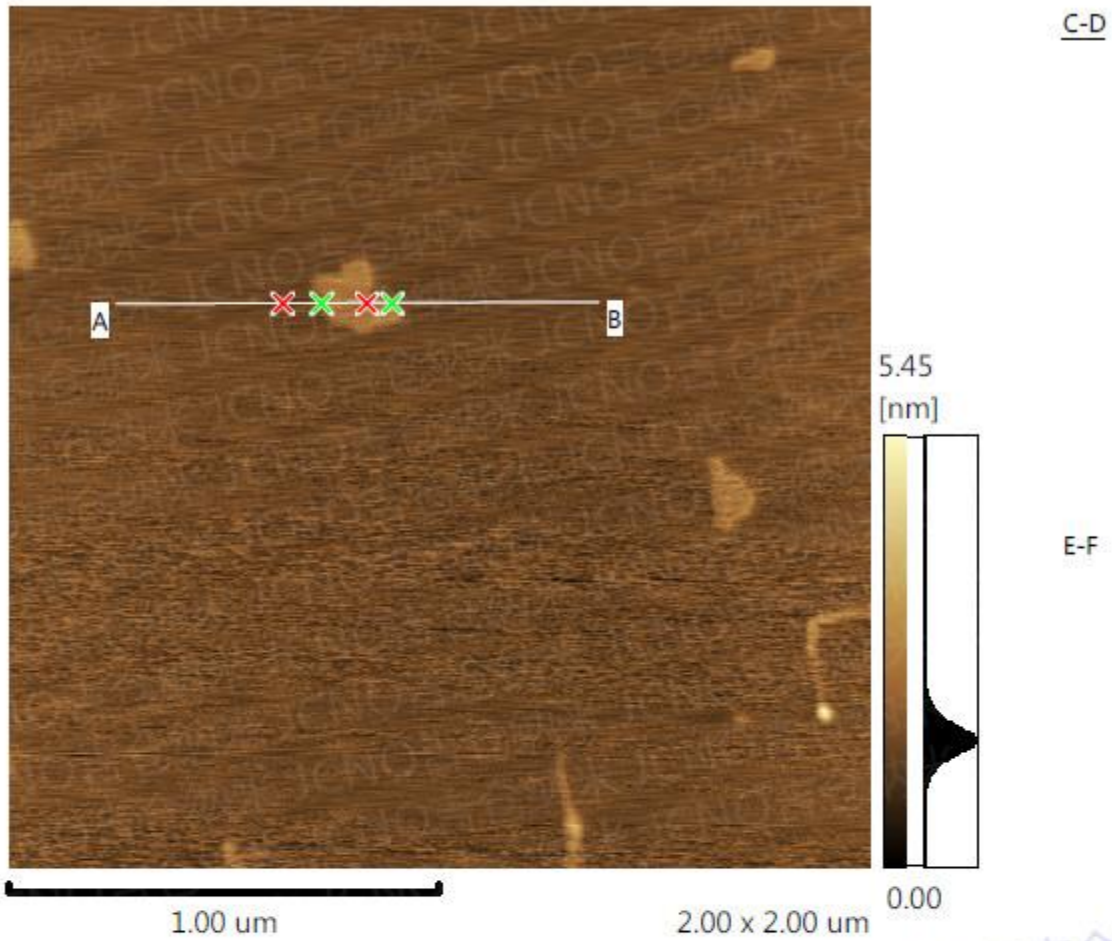
Add: Nnijing Road Jianning No. 241 Room 703

Zip: 210015

Tel: +86 25 58830538, 400-025-7300

Fax: +86 25 83140772

www.jcno.net



	Width[μm]	Height[nm]	Angle[deg]
—	0.20	0.52	0.15
—	0.17	0.03	0.01

Nanjing JiCang Nano Technology Co., Ltd

Add: Nnijing Road Jianning No. 241 Room 703

Zip: 210015

Tel: +86 25 58830538, 400-025-7300

Fax: +86 25 83140772

www.jcno.net



Sample : 石墨
Operator:
Comment : 20 deg/min , for Metal
Group : [Qual-Quant.]20mm-Metal-BCN
Date : 2014-03-04 13:09

[Quantitative Result]

Analyte	Result	Proc-Calc	Line	Net Int.	BG Int.
C	99.7362 %	Quant.-FP	C Ka	80.090	7.001
S	0.1033 %	Quant.-FP	S Ka	12.031	0.613
Si	0.0671 %	Quant.-FP	SiKa	2.956	0.023
Ca	0.0325 %	Quant.-FP	CaKa	7.490	0.678
Al	0.0171 %	Quant.-FP	AlKa	0.581	0.025
Na	0.0149 %	Quant.-FP	NaKa	0.054	0.013
Mg	0.0091 %	Quant.-FP	MgKa	0.076	0.031
Fe	0.0072 %	Quant.-FP	FeKa	3.844	1.417
K	0.0058 %	Quant.-FP	K Ka	1.338	0.270
Ni	0.0019 %	Quant.-FP	NiKa	1.862	2.332
P	0.0017 %	Quant.-FP	P Ka	0.242	0.123
Cr	0.0017 %	Quant.-FP	CrKa	0.430	0.579
Cu	0.0013 %	Quant.-FP	CuKa	1.308	2.836

Nanjing JiCang Nano Technology Co., Ltd

Add: Nnajing Road Jianning No. 241 Room 703

Zip: 210015

Tel: +86 25 58830538, 400-025-7300

Fax: +86 25 83140772

www.jcno.net